

SHANNY

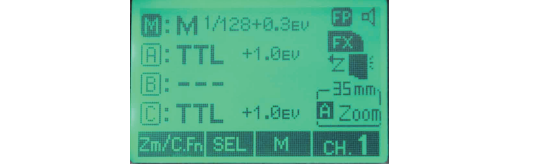
SN600SN

Speedlite For Nikon



INSTRUCTION MANUAL

Set [**\*Z**]button can set the flash to master unit. Press [SEL] button to choose groups,then press [MODE] button to choose this group's flash mode TTL/M/-,-"- means close the current group flash.



Master Unit

**Zm/C.Fn**

Short press this button to set the changes of focal length changes, automatic Zoom, or manually Zoom 20 ~ 200 mm. Long press [Zm/C.Fn] is used to set custom functions,you can define flash function according to the demand. Such as sleep, auxiliary focus lamp, prompt, backlight, etc, select to set up project, press the corresponding button to set the 0/1/2 required functionality.

Remarks:Master RPT set,long press [Zm/C.Fn] button to enter the custom function C.Fn02, can set RPT Multi mode. [CLEAR C.Fn Set.] option is restarting Custom Settings, press [ CLEAR ] button can be restore custom settings. [System restore] option is restarting the system, press [ S.R ] button can be restore factory settings.

**SEL**

Press [SEL] button can be choose the master unit or flash groups, Each operation can be M/A/B/C group set up in the cycle, then press [MODE]can be set group flash mode TTL/M/- -. Remarks: The flash of grouping M on behalf of the master control unit.

**+/- M**

According to the [+/-]button to set the flash exposure compensation (- 3 ev ~ + 3 ev), [M] used to set the brightness output (1/128 ~ 1/1). Function adjustment according to the current mode, the image display shall prevail.

**A Zoom**

Automatic zoom, flash zoom position can be back and forth with the change of the focal length of the lens.(20 ~ 200 mm).

**FP REAR**

FP/REAR sync icon,This position will show [high-speed syn], [2nd curtain sync] icon.HSS can be set through the camera,2nd curtain sync only can be display when the flash is off-camera, Please refer to the related instructions set method.

## Warning

- ① As the product has high-voltage components, please don't disassemble it by yourself. You can contact our after-sales service or sent it to the repair station if repair is needed.
- ② Please keep the product dry and away from wet hands. It can not be immersed into water or exposed to rain or else it may fail to function.
- ③ The product is related to battery. As for battery's usage and management, please refer to the corresponding operation specifications.
- ④ Don't violently strike or shake the product, it may lead to product failure.
- ⑤ Please don't flash it at close range directly to human eyes (especially infants' and young children's), otherwise it may damage the eyes or cause blindness.
- ⑥ Please don't place this product in the car in which it will be under direct sunlight, as the temperature in these places will be very high, which is likely to cause damage to components.
- ⑦ Please don't use the flash where there are flammable gases, otherwise it may lead to gas explosion.

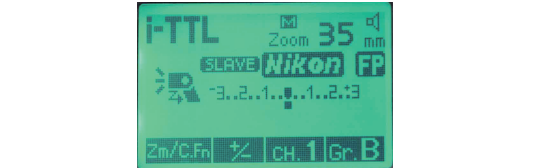
## SN600SN Product Functions

- ① The set-top i-TTL flash: Install it on the Nikon camera to achieve automatic flash photography.
- ②Optical signal master control function,automatic wireless remote control(optical pulse )
- ③Optical signal slave function:Off-camera wireless high speed sync flash (optical pulse )
- ④ Autofocus auxiliary functions.
- ⑤ Automatic zoom function, flash zoom position can be back and forth with the change of the focal length of the lens.
- ⑥ Support to FX/DX frame switch over.

Thank you very much for buying Shanny products.

Please read the instruction manual carefully before you install the SN600SN on your camera, in order to achieve fully function of the flash and the camera. After the installment of SN600SN to Nikon camera, Flash exposure compensation with the camera exposure compensation superimposed.

Operate [**\*Z**] to set the flash to light trigger SLAVE unit.



SLAVE Nikon



SLAVE S1

[Zm/C.Fn], [+/-], [CH.1] set focal length/custom functions, exposure compensation and telecommunication channels.

**SLAVE Nikon**

It can be compatible withNikon Optical signal trigger system, the master flash adopts SN600SN, SB-910/900/800/700 and camera Built-in flash optical signal to trigger.

**CH.1**

Setting button for communication channel, it can switch to CH.1~CH.4. The master and slave units set to the same channel.

**Gr. B**

Press this button to set the flash group A/B/C.

**SLAVE S1/SLAVE S2**

S1/S2 optical trigger, the master flash can adopt the set-top cameraTTL, M mode. S1/S2 mode's brightness can be manually set by the button of [+/-], brightness range is1/128 ~1/1. S1, S2 optical trigger mode can support High-speed sync. Press [SYNC] to set high-speed sync <FP>.

## Quick Guide

- ① Automatic flash: Set the flash to i-TTL mode, can fully automatic flash photography.
- ② Master unit:Press[**\*Z**] button to set the SN600SN to master unit,press [SEL] button to choose master flash or A/B/C group,then Press [MODE] button to choose group mode TTL/M/--.
- ③ Master PRT mode: Long press [Zm/C.Fn] to custom function,set C.Fn 02 to ON.
- ④ Optical slave unit(Optical pulse):Press [**\*Z**]button to set the SN600SN to SLAVE. There have three choice SLAVE Nikon/SLAVE S1/SLAVE S2.
- ⑤ The set-top flash: Press [MODE], switch to i-TTL, M, RPT mode, the installed camera can be triggered flash.
- ⑥High-speedsync: From the camera menu, set the auto FP icon turn to "on", after set the auto FP, your camera can use anyshtutter speed.
- ⑦ AutoZoom: Set A Zoom, flash zoom position can be back and forth with the change of the focal length of the lens. (20 ~ 200 mm).

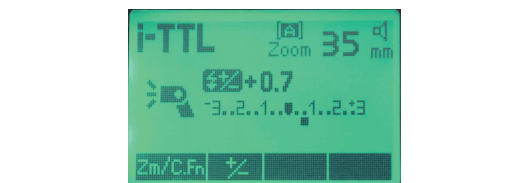
## Special Explanation

- ① SN600SN flash can be mounted on-camera ,it is fully supporting i-TTL function and Mater trigger flash function. Master unit supports i-TTL,M,RPT mode to flash.
- ② ALL off-camera mode, SLAVE Nikon/SLAVE S1 /SLAVE S2 support high speed flash.

### Precautions about the continuous flash

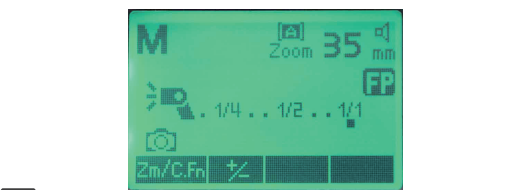
- ① To prevent degradation and damage of the flash head caused by overheating, please do not continuously flash it for more than 20 times. After 20 times, cool it at least for 10 minutes.
- ② If you use it more than 20 times in a row to continue with a short interval repeated flash, the security function may be activated to limit the flash. In the restriction period, the recycling time is automatically extended. If that happens, please cool the flash for at least 15 minutes.

Normal set-top camera flash, press [MODE] to switch to i-TTL/ M/RPT mode.



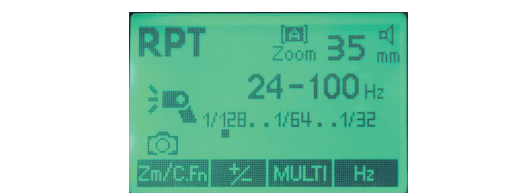
**i-TTL**

LCD panel displaying this icon indicates that the current flash mode is i-TTL. The camera and the flash can manage automatic metering to ensure the correct exposure, thus to make the subject and the background get balanced exposure. In i-TTL mode, you can set the flash exposure compensation and Bracket Exposure in range of -3EV ~ +3EV, with an increment of 1/3 gear.



**M**

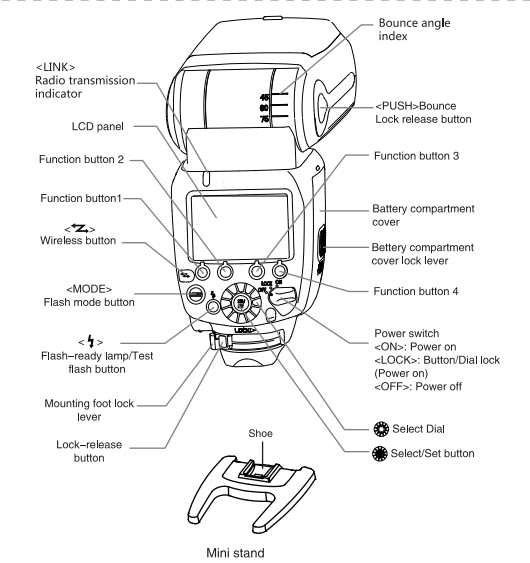
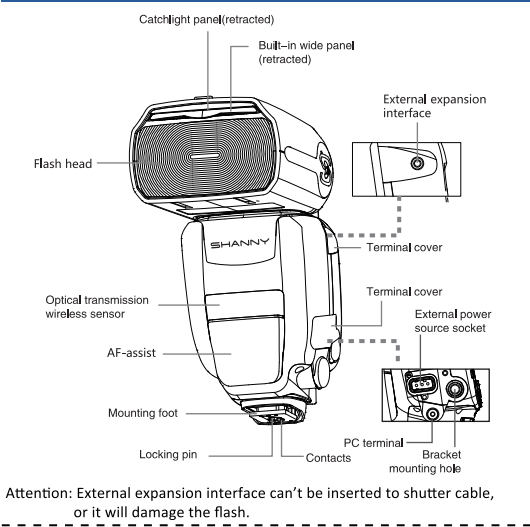
LCD panel displaying this icon indicates that the current flash mode is M, which means setting the flash output manually. Setting range is 1/128 ~ 1/1, with an increment of 1/3 gear. Rotate the dial to the right or left to add or subtract.



**RPT**

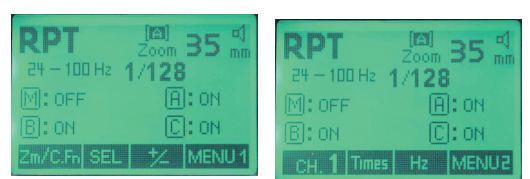
LCD panel displaying this icon indicates that the current flash mode is RPT, stroboscopic mode, which means using slow shutter to frequency flash light. It can shoot multiple continuous motions in one photo similar to animation shooting. You can set the flash output, guide number and flash frequency in s troboscopic flash mode.

## Component



**Master RPT mode**

Long press [Zm/C.Fn]button to custom functions,selet teh C.Fn02 to ON,enter to RPT mode



**FX/DX camera frame switch**

Accroding to the difference size of camera picture,it can be manual switch to FX/DX zoom through the custom fuction , in order to suit for the FX/DX camera pictures. By default, the SN600SN zoom is fit for FX frame.

**PC port**

For flash sync cable connecting with camera or trigger.

**Baffle board**

Bounce Flash, by moving the flash head towards the wall or the ceiling, the flash will bounce off the surface before illuminating the subject, which can soften shadows behind the subject for a more natured-looking shot. When use it, pull out the baffle board and Wide Angle dispersion plate together, then push back the Wide Angle dispersion plate to use the baffle board.

**Flash head rotation**

Flash head can be rotated up and down, left and right. Up/down from - 7 to 90 degrees, left/right from o to 180 degrees.

**Overheating warning**

If the flash continuously worksat short intervals, flash head temperature will rise and activate the "overheating" warning function. At this time the LCD panel will display [overheating] and lock the flash. Please cool the flash for more than 10 minutes.

## Main Display Interface

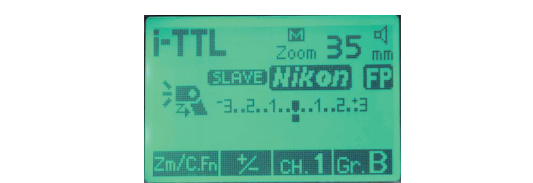
Master unit (Optical pulse): SN600SN can be master unit, optical signal transmission ,can be master control the SN600SN,SN600N,SN600S,SB-910/900/800/700 ect's.



On-camera i-TTL: Mount the camera for automatic flash photography



Optical slave unit(Optical pulse): It can compatible with[Nikon CLS system], master unit can use with SN600SN,SB-910/900/ 800/700 flash or camera which has C instruction's optical signal.



Off-camera light trigger (S1/S2): Use set-top camera M, TTL trigger mode,support high-speed sync.



## Specification Parameters

- Guide number:** GN60 (ISO100, 200mm)
- Wireless Flash:** Optical pulse transmission Master and Slave
- Flash mode:** i-TTL, M, RPT
- Zoom range:** Auto,20 ~ 200mm (When using wide angle dispersion plate is 14 mm)
- High speed sync:** 1/8000s
- Slave flash:** Optical pulse SLAVE Nikon,light trigger S1/S2
- Shutter synchronization:** High Speed Sync,Front-curtain Sync and Rear Sync
- Flash exposure compensation:** Support (with an increment of 1/3 gear in +/-3 gear)
- Bracket exposure:** Support
- Flash exposure lock:** Support
- Modeling flash:** Support
- AF assist-focus:** Support
- Manual flash:** 1/128~1/1 (with an increment of 1/3 gear)
- Frequency flash:** 1 ~ 100Hz
- Recycle time:** Quick flash less than 2s, ordinary flash less than 3s
- Optical transmission distance:** About 20m
- Optical transmission channels:** 4
- Flash groups:** Support for A/B/C groups
- Power supply:** 4×AAsize batteries (Alkaline or Ni-MH is usable)
- External interface:** Hot-shoe, PC synchronous interface , external charging interface
- Measurement:** 79.7 (L) ×142.9 (W) ×125.4 (H) mm
- Net weight:** About 420g (not including batteries)

## Preparations

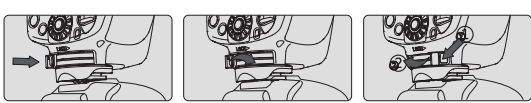
Battery installation : Install four \*5 (AA) batteries According to the following steps to install the battery



According to the instructions of battery, ensure the batteries "+" and "-"contact towards the right direction.

Batteries can be very hot if replacingthem after continuously flashing. When it displays <[Battery icon]>, please replace new batteries. Please use 4 batteries of the same brand. When replace them, please replace four. You can also use (AA/LR6) rechargeable hydrogen (Ni - MH) cells.

Install or remove the flash



Please press the lock release button before install or remove the flash.After the installation, please lock the quick lock key, in casethe flash would fall off.

## Function Brief

**SEL/SET**

This option button can be horizontally rotated to adjust the parameters of flash, the right-hand rotation to increase set parameters, while the left-hand to reduce.

**\*Z**

[**\*Z**]can switch flash trigger mode, including set-top ordinary flash/Master/ SLAVE Nikon /SLAVE S1/SLAVE S2.

**MODE**

[MODE] is flash mode button,to set the flash mode,it can be set as auto-flash i-TTL, manual flash, frequency flash RPT mode.

The content of this manual is formulated according to Shanny's internal test standards. If there are any changes in regard to product design and specifications, please understand there is no prior notice.

**SHANNY**

Manufacturer: Shenzhen SHANNY Photography Optical Equipment Co.,Ltd.  
Add:Room 1502,15F,Dreamland International Center,Heping East Road, Longhua New District,Shenzhen,China 518109  
Tel: +86 0755 23300778 400-877-5231  
Web: http://www.szshanny.com